

What happens after the Practice Review Event?

Review Outcomes

Following the Practice Review event the Standardised Pharmacy Interactions (SPIs) and the Clinical Knowledge Review (CKR) will be analysed and the review outcomes will be compiled.

A number of weeks after the Practice Review event you will receive a feedback report which will detail the outcomes of your Practice Review. The report will show how you performed in each of the four competencies in comparison to the average results for all pharmacists who have undertaken the same Practice Review, thus allowing you to identify areas of strength and potential areas for further development. The report will also indicate if it has been possible to ascertain if you have demonstrated an appropriate level of competence in each of the four competencies during Practice Review.

Potential Outcomes Explained

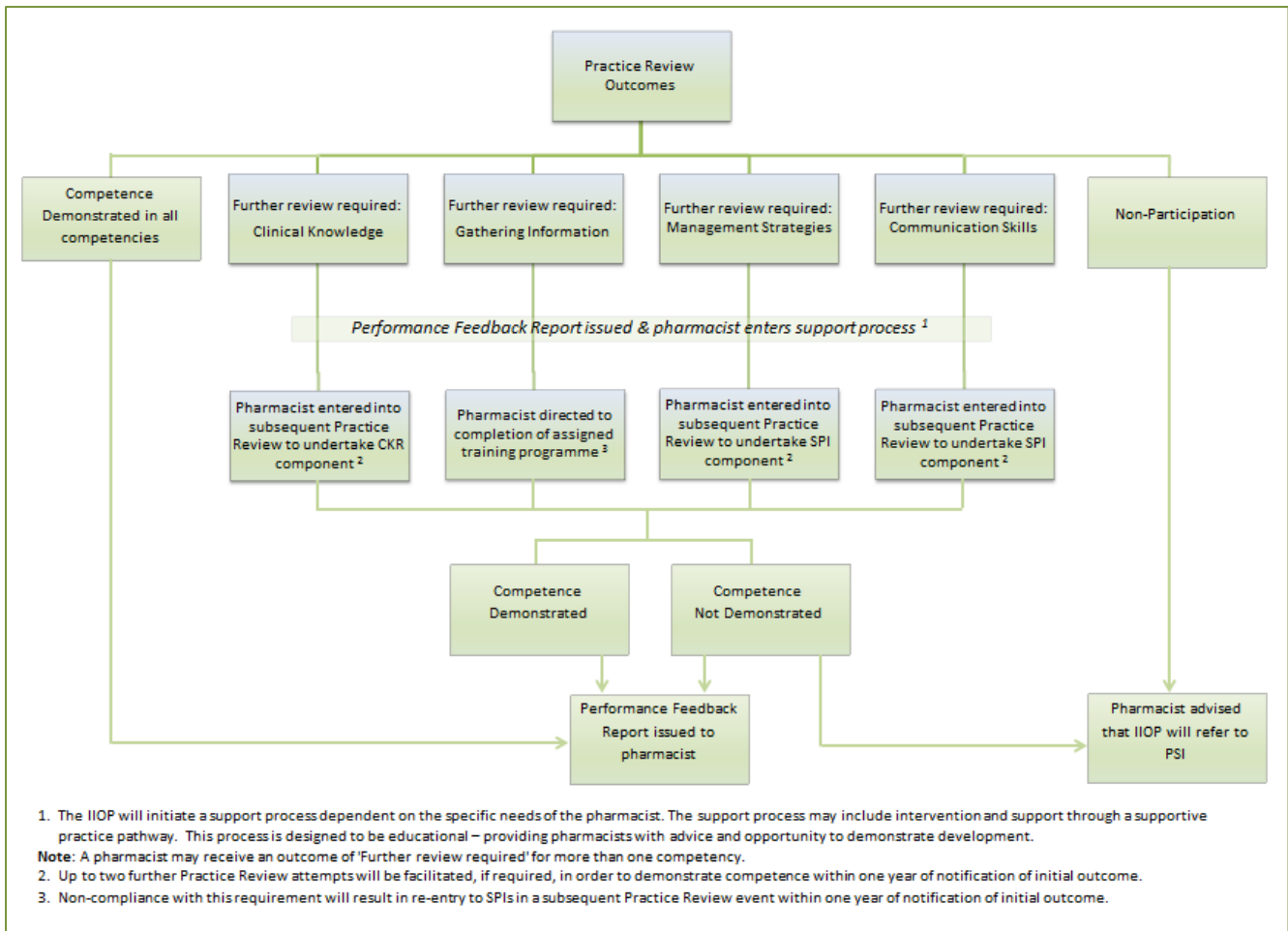
As per section 13 of the Practice Review Policy there are four initial potential outcomes for Practice Review:

1. Competence demonstrated in all competencies
2. Further review required for Clinical Knowledge competency
3. Further review required for SPI related competencies
4. Non-participation

Pharmacists may receive a combination of outcome two and three above if further review is required for both clinical knowledge and SPI related competencies.

If a pharmacist has not demonstrated an appropriate level of competence following one to two subsequent Practice Review attempts within one year of notification of initial outcome, they will be assigned an outcome of competence not demonstrated.

The algorithm below provides an overview of these outcomes.



Supporting Practice

Practice Review is intended to be educational and supportive. With this in mind, it is vital that the IOP provides on-going support to pharmacists in identifying their developmental needs.

In some cases you may find that your performance in one or more of the competencies may not have been as you would have expected and the outcome may show that further review is required in one or more defined competencies during Practice Review. If this is the case the IOP will provide support in line with the educational and supportive ethos of Practice Review. The support process may include intervention and support through a supportive practice pathway, dependent on the specific needs of the pharmacist. This process is designed to be educational – providing pharmacists with advice and opportunity to demonstrate development. Depending on your outcome, you may be directed towards a specific training programme and/or required to undertake another full or partial Practice Review.

In cases where a pharmacist has been assigned a final outcome of competence not demonstrated or does not participate in Practice Review the Executive Director of the IOP shall be obliged to refer the pharmacist to the PSI in accordance with the IOP Practice Review Policy. This will be done following communication with the pharmacist.